

## Updates to "Birding in Poland" – Oriolus Publishing House, Uppsala, 2015

Version 15 released 2<sup>nd</sup> May 2021

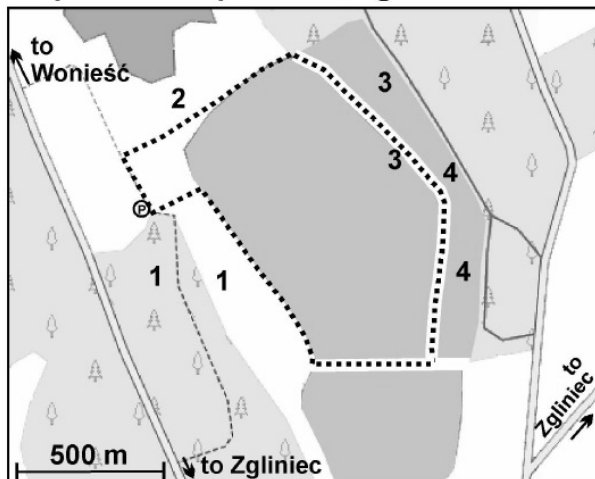
Last updates are highlighted in yellow

We would like to thank John van der Woude (NL), Robert Kruszyk (PL), Dominik Druh (PL), Łukasz Toczyłowski (PL), Emilia Orpik (PL), Marek Foks (PL), Leszek Guzdek and Kamil Guzdek (PL), Mariusz Miotke (PL), Ogólnopolskie Towarzystwo Ochrony Ptaków/ The Polish Society for the Protection of Birds), Regionalna Dyrekcja Ochrony Środowiska w Kielcach (Regional Directorate for Environmental Protection in Kielce, PL), Regionalna Dyrekcja Ochrony Środowiska w Bydgoszczy (Regional Directorate for Environmental Protection in Bydgoszcz, PL), Regionalna Dyrekcja Ochrony Środowiska w Olsztynie (Regional Directorate for Environmental Protection in Olsztyn, PL), Regionalna Dyrekcja Ochrony Środowiska w Łodzi (Regional Directorate for Environmental Protection in Łódź, PL), Management of Zespół Parków Krajobrazowych Województwa Łódzkiego Oddział Terenowy Nadpilicznych Parków Krajobrazowych (landscape park, PL), Management of Zespół Parków Krajobrazowych Województwa Lubuskiego (landscape park, PL), Regionalna Dyrekcja Ochrony Środowiska w Poznaniu (Regional Directorate for Environmental Protection in Poznań, PL), Regionalna Dyrekcja Ochrony Środowiska we Wrocławiu (Regional Directorate for Environmental Protection in Wrocław, PL), Regionalna Dyrekcja Ochrony Środowiska w Rzeszowie (Regional Directorate for Environmental Protection in Rzeszów, PL), Regionalna Dyrekcja Ochrony Środowiska w Gorzowie Wielkopolskim (Regional Directorate for Environmental Protection in Gorzów Wielkopolski, PL), Regionalna Dyrekcja Ochrony Środowiska w Białymstoku (Regional Directorate for Environmental Protection in Białystok, PL), Błaziej Safaryn (State Forests, Rudka, PL), Regionalna Dyrekcja Ochrony Środowiska w Gdańsku (Regional Directorate for Environmental Protection in Gdańsk, PL) Regionalna Dyrekcja Ochrony Środowiska w Krakowie (Regional Directorate for Environmental Protection in Kraków, PL), Aleksandra Ferens (Krajowy Ośrodek Wsparcia Rolnictwa Oddział we Wrocławiu), Krzysztof Kowalewski, Regionalna Dyrekcja Ochrony Środowiska w Lublinie (Regional Directorate for Environmental Protection in Lublin PL) for their comments.

### Errata

Where	What is written	What should be written
Page 150 next to map 26-4	( <b>map 26-3</b> , parking place <b>12</b> - 52°43'40"N, 23°45'3"E). It encompasses predominantly a spruce forest and alder carr woods with many dead trees - an area extensively used by most woodpecker species as a foraging and nesting site ( <b>9, 11</b> ). During the spring, in this area you also can observe Lesser Spotted Eagle ( <b>9</b> ), Eurasian Pygmy Owl ( <b>8</b> ) and Collared Flycatcher ( <b>9</b> ).	( <b>map 26-3</b> , parking place <del>12</del> <b>11</b> - 52°43'40"N, 23°45'3"E). It encompasses predominantly a spruce forest and alder carr woods with many dead trees - an area extensively used by most woodpecker species as a foraging and nesting site ( <del>9, 11</del> ) ( <b>8,10</b> ). During the spring, in this area you can also observe Lesser Spotted Eagle ( <del>9</del> ) ( <b>8</b> ), Eurasian Pygmy Owl ( <b>8</b> ) and Collared Flycatcher ( <del>9</del> ) ( <b>8</b> ).
Page 151 3 <sup>rd</sup> line	( <b>map 26-4</b> , toll car park <b>13</b> - 52°42'1"N, 23°50'36"E)	( <b>map 26-4</b> , toll car park <del>13</del> <b>12</b> - 52°42'1"N, 23°50'36"E)
Page 151 next to map 26-5	Also worth visiting is the European Bison Show Reserve ( <b>map 26-5</b> , toll car park <b>14</b> - 52°42'13"N, 23°47'41"E). While here, watch out for Red-breasted and Collared Flycatchers (the latter shows up at the road in the Show Reserve) as well as Middle Spotted and Grey-headed Woodpeckers ( <b>16</b> ).	Also worth visiting is the European Bison Show Reserve ( <b>map 26-5</b> , toll car park <del>14</del> <b>13</b> - 52°42'13"N, 23°47'41"E). While here, watch out for Red-breasted and Collared Flycatchers (the latter shows up at the road in the Show Reserve) as well as Middle Spotted and Grey-headed Woodpeckers ( <del>16</del> ) ( <b>15</b> ).
Page 194 map 35	Road from Kostrzyn nad Odrą along southern boundary of the Warta Mouth National Park is marked as route F	It should be marked as route G
Page 227	Map 43-2 is missing	See map 43-2 below the table
Page 465 10 <sup>th</sup> line	Rudy	Rudze
Page 524 map 113	industrial railway	motorway A4 (E 40)
Page 524 27 <sup>th</sup> 28 <sup>th</sup> line	Locations where you can leave your vehicle have been marked in red on the map.	Locations where you can leave your vehicle have been marked <del>in red</del> on the map.

### Map 43-2 Fishponds in Zgliniec



© OpenStreetMap contributors [www.openstreetmap.org](http://www.openstreetmap.org)

1 - Black Woodpecker, 2 - Little Bittern and Eurasian Bittern, 3 - Ferruginous Duck, 4 - Tufted Duck, Common Pochard and Little Ringed Plover

Copyright OpenStreetMap contributors [www.openstreetmap.org](http://www.openstreetmap.org) (copyright for the birdwatching data on the maps by the author of the respective site description). This work is licensed under a Creative Commons Attribution-Share Alike Generic 2.0 (CC-BY-SA 2.0) License <http://creativecommons.org/licenses/by-sa/2.0>

### Updates

#### **Roads - page 12**

Since September 2014, it has been obligatory for a person who walks on the side of a road outside a built-up area at night to wear a reflective element.

Drivers (including foreigners) who exceed the speed limit in a built-up area by 50 km/h lose their driving license for three months (in force since May 2015).

#### **Regional ornithological or wildlife protection organizations dealing with ornithology - page 22**

**Stoleczne Towarzystwo Ochrony Ptaków** – organises many ornithological excursions, mainly in Warsaw and the neighbourhood, and gives its programme on the site

<http://stop.eko.org.pl/wp/blog/category/wycieczki/> or

<http://stop.eko.org.pl/wp/blog/category/aktualnosci/>

**Małopolskie Towarzystwo Ornitologiczne** – organises many ornithological excursions, mainly in Cracow and the neighbourhood, but also more generally in southern Poland, program at

<http://mto-kr.pl/program-wycieczek-mto/>

#### **Ornithological (bird–ringing) camps – page 23**

Important! You can join the staff only after contacting the head of the camp and receiving confirmation of participation.

Details on camps in 2019 appear in separate file [www.birdinginpoland.com/ringing.pdf](http://www.birdinginpoland.com/ringing.pdf)

#### **Databases - page 25**

The new database Ornitho.pl (in Polish, English, German and French) has been introduced in place of the former Awibaza database. The new internet access is at [www.ornitho.pl](http://www.ornitho.pl). The database is also available as the free application NaturaList for Android mobiles from the Play app store at <https://play.google.com/store/apps/details?id=ch.biolovision.naturalist>

There is a new application for Android mobiles whereby owls can be reported to the database *Atlas Sów Polski* (Polish Owls Atlas). The free Android app can be downloaded from the Google play app store at <https://play.google.com/store/apps/details?id=com.yarmobile.sowy>. The application is in Polish, and requires online registration, which can be accessed at [www.atlas.sowy.sos.pl](http://www.atlas.sowy.sos.pl). The site [www.atlas.sowy.sos.pl](http://www.atlas.sowy.sos.pl) as well as instructions for the online database and app are now available also in English. (updated August 2019)

The database of Małopolskie Towarzystwo Ornitologiczne is available online at [www.iop.krakow.pl/dbPtak/baza-obszerwacji](http://www.iop.krakow.pl/dbPtak/baza-obszerwacji). The site is in Polish and you will first need to send in a registration form by mail.

### **If you find an injured bird – page 25**

Site <http://klubciconia.ptaki.info.pl/> seems to be closed. The list of vets specializing in birds or other wild animals is available at <https://www.gdos.gov.pl/wykaz-osrodkow-rehabilitacji-zwierzat-w-polsce> (updated April 2021)

### **The Polish Avifaunistic Commission - page 25**

An English-language version of the submission form for rare birds is available at [http://komisjafaunistyczna.pl/?page\\_id=2617&lang=en](http://komisjafaunistyczna.pl/?page_id=2617&lang=en)

### **Birdwatching and Polish law – page 32**

The new regulation of the Minister of the Environment of 16 December 2016 on animal species protection is currently in force (since 1<sup>st</sup> January 2017). There is only one change in the field of birdwatching compared with regulations described in the book. Restrictions on photographing, filming and watching a bird in a manner which causes a risk of disturbance do not apply to Dunlin *Calidris alpina*.

### **Site 2 Świdwie Nature Reserve (Rezerwat Świdwie) – page 52**

Since June 2019 the viewing tower is closed until further notice. (updated September 2019)

### **Site 3 Karsiborska Kępa (an island) – page 54**

Webpage in English is available <https://otop.org.pl/our-projects/we-protect/reserves-and-nature-trails/karsiborska-ke%cc%a8pa/?lang=en> (updated September 2019)

### **Site 5 Lower Odra River Valley (Dolina Dolnej Odry) - page 60**

Access: Contact to the management of the gravel pit in Bielinek – The company “Szczecińskie Kopalnie Surowców Mineralnych S.A.” <http://www.sksm.com.pl/en> (webpage in English) mail: [bh@sksm.com.pl](mailto:bh@sksm.com.pl) or phone: + 48 91 462 16 58

Contact to the management of the gravel pits in Chlewice and Kaleńsko – The company “Minerały Sp. z o.o.” <http://www.mineraly.com> (webpage in Polish) mail: [poczta@mineraly.com](mailto:poczta@mineraly.com) phone +48 95 760 12 40 or +48 609 757 900 (updated September 2019)

### **Site 6 Słowiński National Park (Słowiński Park Narodowy) – page 67**

<http://slowinski.parknarodowy.com> - is the other website of Słowiński National Park (in Polish) Clarifying the text on route C1 – you need no the permit from the Directorate of the Park to walk route C1, but if you would like to turn north from this route to point 7 such permit is needed.

### **Site 8 Modła Lake (Jezioro Modła) – page 76**

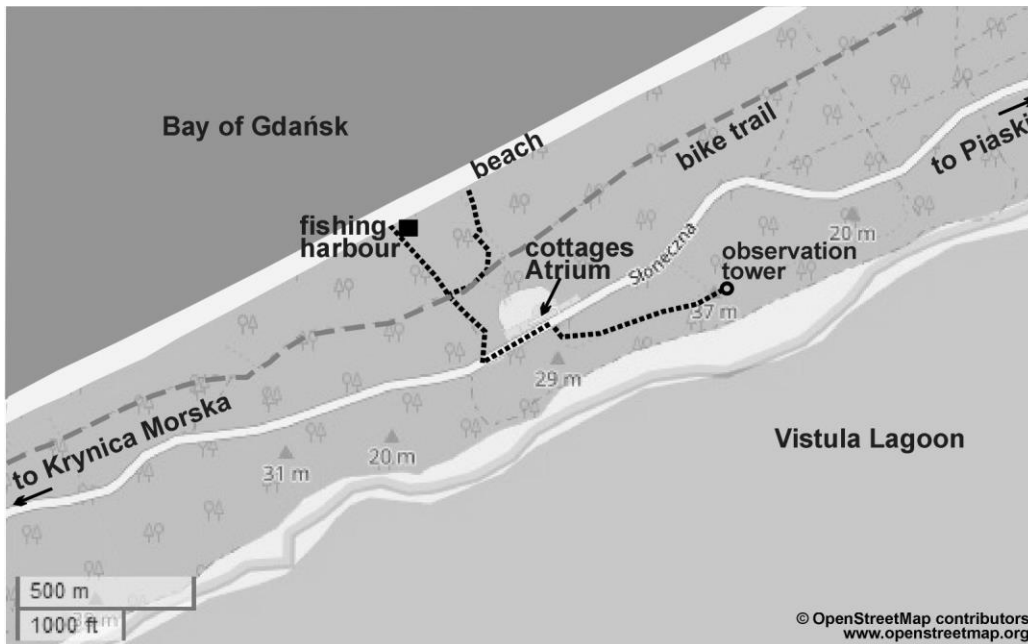
Access: Nature reserve Zaleskie Bagna is not available for public. (updated May 2020)

### C. GDAŃSK POMERANIA (POMORZE GDAŃSKIE) - page 79

Since January 2016, it has been possible to birdwatch from a boat in the area of the Baltic Sea called the Zatoka Gdańska (Bay of Gdańsk). More information can be obtained in Polish from <http://rejsynaptaki.blogspot.se/p/oferta-rejsow.html>. The boat is 14 meters long and can accommodate 20 people. There is a professional ornithologist on board during the 8–9 hour trip. For more information on the excursion call +48 503 603 936. (updated August 2019)

### Site 9 Vistula Spit (Mierzeja Wiślana) – page 80

New observation tower is located 1.5 km east of Krynica Morska (54°24'11.066"N, 19°31'15.376"E). This site is convenient for observation of birds of prey during migration. (July 2018, information courtesy of Drapolicz Association)



Copyright OpenStreetMap contributors [www.openstreetmap.org](http://www.openstreetmap.org). This work is licensed under a Creative Commons Attribution-Share Alike Generic 2.0 (CC-BY-SA 2.0) License <http://creativecommons.org/licenses/by-sa/2.0>

### Site 10 Bay of Puck (Zatoka Pucka) - page 84

Nature reserve Słone Łąki is accessible by the educational nature trail (boardwalk). The map of the trail is available at [http://gdansk.rdos.gov.pl/files/artykuly/25448/Slone-Laki\\_icon.jpg](http://gdansk.rdos.gov.pl/files/artykuly/25448/Slone-Laki_icon.jpg)

The trail is marked with blue and red on the map.

Nature reserve Mechelińskie Łąki is closed for public. (updated May 2020)

### Site 12 Beka Nature Reserve and surrounding area - page 90

Map 12 and Access: Path between “the cross” and a point marked as “from here you can see the Reda River Mouth” is closed for public. Otherwise marked trail in the reserve shown on the map 12 is accessible to visitors. (updated September 2019)

### Site 25 Biebrza River Valley (Dolina Biebrzy) - page 137

A large fire occurred in the Middle Basin of Biebrza River Valley in april 2020 (the area around points 17 and 18 on the map 25). 5526 hectares have burned.

You can see available trails at <https://www.biebrza.org.pl/167,hiking-trails> Some trails can be temporary closed or requires a guide.

A list of licensed guides is available at <https://www.biebrza.org.pl/173,licensed-guides> (updated April 2021)

## Site 26 Białowieża Forest (Puszcza Białowieska) - page 151

The Polish government decided that logging outside the National Park should be increased. The explanation for this, according to Environment Minister Jan Szyszko, is the need to stop an outbreak of the European Spruce Bark Beetle (*Ips typographus*). As only about 50% of the forest whose logging is foreseen is of spruce (the only tree that can be affected by the pest beetle), this explanation would seem to be untrue.

For more on this problem: Łukasz Ławicki. The Białowieża Forest – a new threat. *British Birds* published on 17 June 2016 online <https://britishbirds.co.uk/article/bialowieza-forest-new-threat/>  
For correspondence from Polish scientists published in *Nature* on 25 February 2016 (vol. 530, page 419) see [www.nature.com/nature/journal/v530/n7591/pdf/530419b.pdf](http://www.nature.com/nature/journal/v530/n7591/pdf/530419b.pdf)

Since 1<sup>st</sup> April 2017, access to the large part of Białowieża Forest falling within Białowieża Forestry Management Area (Nadleśnictwo Białowieża) in south-eastern part of Białowieża Forest has been prohibited, see map at: [http://www.bialowieza.bialystok.lasy.gov.pl/aktualnosci/-/asset\\_publisher/J2Fu9wuoZqJd/content/tereny-dostepne-dla-turystow](http://www.bialowieza.bialystok.lasy.gov.pl/aktualnosci/-/asset_publisher/J2Fu9wuoZqJd/content/tereny-dostepne-dla-turystow) (status checked April 2021)  
While the official reason for this is the presence of many dead trees and the danger of tree falls, it is possible that this restriction seeks to prevent people from seeing the extremely large scale of the logging operations taking place in mature forests within the Białowieża Forestry Management Area.

Minor restrictions on access are also in place in the Hajnówka Forestry Management Area (Nadleśnictwo Hajnówka) in western part of Białowieża Forest, see map at: <https://hajnowka.bialystok.lasy.gov.pl/documents/62688/35111023/Za%C5%82%C4%85cznik+nr+2/1e53c275-3304-3145-2db8-a3ddaec33a22?t=1577787630130> (updated April 2021)

Access to Białowieża National Park remains the same as usual.

There are no restrictions on access in Browsk Forestry Management Area (Nadleśnictwo Browsk) in northern part of Białowieża Forest. (status checked April 2021)

Also of interest: Since June 2015 it has been possible to visit the Belarusian part of Białowieża Forest, i.e. the Belovezhskaya Pushcha National Park and surroundings, without a Belarusian visa. First you have to complete the registration form at <http://bezvizy.npbp.by/en/> (please note that this is a new address). Confirmation received by mail must then be printed out and shown at the border. Health insurance accepted in Belarus should be purchased.

Such insurance can be purchased at:

- Białowieski Hotel in Białowieża, phone +48 85 681 20 22, mail [marketing@hotel.bialowieza.pl](mailto:marketing@hotel.bialowieza.pl)
- Travel office Junior in Białystok, Stołeczna Street 25, phone +48 85 744 43 26, mail: [biuro@junior.bialystok.pl](mailto:biuro@junior.bialystok.pl) (you can communicate in English and Russian).

Webpage in Polish [www.junior.bialystok.pl](http://www.junior.bialystok.pl)

- Travel office of the PTTK branch in Białowieża, Kolejowa Street 17, phone +48 85 6812295, mail: [pttk@pttk.bialowieza.pl](mailto:pttk@pttk.bialowieza.pl) (you can communicate in English, German and Russian).

Webpage in English <http://pttk.bialowieza.pl/info/20/about-us>

Belarus can only be entered via border crossings Terespol-Brześć, Sławatycze - Domaczewo, Połowce-Pieszczatka by car or via border crossing Białowieża-Piererow (only on foot or by bike), or by train via railroad border crossing Terespol-Brześć. (updated August 2019)

More information at <http://bezvizy.npbp.by/en/> (in Polish, English and Russian). The only part of Belarus that can be visited in this way is Belovezhskaya Pushcha National Park and surroundings included the city of Brest.

## Site 27 Knyszyn Forest (Puszcza Knyszyńska) - page 157

Also of interest: The Arboretum in Kopna Góra about 11 km west of Supraśl on road No. 676. There is a collection of more than 500 species of shrub and tree, though mostly young exemplars given that the Arboretum was founded in 1988. Access 1<sup>st</sup> April to 30<sup>th</sup> September. Opening hours 9-19. A guide can be arranged on + 48 85 71 31 570. Access without the guide is free. A map of the Arboretum can be found at:

[www.suprasl.bialystok.lasy.gov.pl/documents/62771/0/mapka+arboretum+PDF.pdf/f89295d4-f2ea-4138-bca3-737b72b8b85d](http://www.suprasl.bialystok.lasy.gov.pl/documents/62771/0/mapka+arboretum+PDF.pdf/f89295d4-f2ea-4138-bca3-737b72b8b85d)

Access to the reserves Krzemienne Góry, Las Cieliczański and Krasne is prohibited (updated January 2020).

### **Site 28 Narew River Valley (Dolina Narwi) - page 167**

Also of interest: There is a nice boardwalk (of about 1 km) leading from Waniewo to Śliwno, all the way through the marshes along the Narew River.

The White Stork village of Pentowo (between Tykocin and Kiermusy) hosts 26 nests in the 2016 breeding season. There are two observation towers in the manor. The entry fee is 5 PLN. There is bed and breakfast at the place, parking, and an exhibition about the White Stork

[www.pentowo.pl/en/](http://www.pentowo.pl/en/) - phone +48 85 718 16 29 or +48 505 929 925, and communication in English is possible.

Access to the reserves Bagno Wizna I and Bagno Wizna II is prohibited (updated December 2019).

Pietkowo Fishponds about 6 km SW of Suraż are available to public. There is a birdwatching tower and several hides in the area. Map at <http://www.cyraneczka.edu.pl/content/mapka>

Fishponds belong to Lasy Państwowe (State Forests). It is obligatory to inform the forester Mr Piotr Zapisek phone +46 661 303 054, or mail: [piotr.zapisek@bialystok.lasy.gov.pl](mailto:piotr.zapisek@bialystok.lasy.gov.pl) (updated May 2020)

### **Site 30 Popielewo Fishponds (Stawy Popielewo) - page 172**

Access to the reserve Kulikówka is prohibited (updated December 2019).

### **Site 35 Warta River Mouth (ujście Warty) - page 191**

Access: The map of educational nature trails and parking places in Warta River Mouth National Park is available at <https://www.pnujsciewarty.gov.pl/260,infrastruktura-turystyczna> (updated July 2020).

Also of interest: Nature reserves Lemierzyce and Dolina Postomii are accessible by the educational nature trail leading from the village of Lemierzyce to the village of Słońsk. The map of the trail and the whole described area is available at <http://www.zpkwl.gorzow.pl/index.php/do-pobrania/mapy-parkow-i-broszury?download=17:Mapa%20Park%20Krajobrazowy%20Uj%20C5%9Bcie%20Warty> (updated December 2019).

### **Site 38 Kłopot - “Stork Village” and surrounding countryside - page 206**

Access: Since December 2018 The Museum of White Stork in Kłopot is permanently closed (updated November 2019).

### **Site 41 Oaks of Rogalin (Deby Rogalińskie)- page 217**

Access to the reserve Krajkowo is prohibited. There are local roads along the western boundary of the reserve from the parking in Krajkowo Folwark, you can walk there.

Map of the Rogaliński Landscape Park is available at <http://www.zpkww.pl/wp-content/uploads/2018/05/Rogali%C5%84ski-PK-2017.pdf> (updated December 2019).

### **Site 46 Przygodzice Fishponds (Stawy Przygodzickie)- page 236**

Access: Nature reserve Wydymacz is accessible by the educational nature trail and by the blue nature trail. (updated December 2019).

**Site 48 Rakutowo Wetlands (Błota Rakutowskie)- page 246**

Access to the reserve Olszyny Rakutowskie is prohibited (updated September 2019).

**Site 52 Valley of middle section of the Noteć River and the Bydgoszcz Canal (Kanal Bydgoski) - page 265**

Access: Contact to the management of the fishponds in Ślesin, Występ and Samostrzel – The company “CGFP Ryby Sp. z o.o.” <http://www.karpnakielski.pl> mail: [kontakt@karpnakielski.pl](mailto:kontakt@karpnakielski.pl) (preferred) or phone: +48 512 030 660, and communication in English is possible. You are not allowed to drive your car within fishponds area.

Contact to the management of the fishponds in Ostrówek – The company „AGRIFARM” <http://www.agrifarm.pl> mail: [agrifarm@agrifarm.pl](mailto:agrifarm@agrifarm.pl) phone +48 67 281 41 83 (updated August 2019)

Also of interest: Access to the reserves Skarpy Ślesińskie and Łąki Ślesińskie is prohibited. Nature reserve Kruszyn, is accessible by two educational nature trails. There is a dedicated parking place (according to the site of State Forests <http://www.czaswlas.pl> ) by Lesniczówka Zielonczyn (forester`s house) by the local road Zielonczyn – Strzelewo , approximate coordinates (53°9'13.9"N, 17°47'15.5"E). Short nature trail is an alternative beginning of the route A Nature reserve Las Minikowski is accessible by the educational nature trail. No parking place. Nature trail begins at the northern boundary of the reserve and ends on the eastern boundary of the reserve.

Nature reserve Borek is accessible by the public road from fishponds in Samostrzel (point 6) to the village of Jadwiżyn. The road is shown on the map 52. No parking place (updated September 2019).

Access to the reserve Zielona Góra is prohibited (updated December 2019).

**Site 59 Kraśnicza Wola Fishponds (Stawy Kraśnicza Wola ) – page 288**

The educational nature trail is ready, the map at <http://www.bocian.org.pl/krasnicza-wola>

The trail “ścieżka edukacyjna” is shown on the map “Mapa Uroczyska Rozłogi” as dotted line. You can also walk along the roads and causeways. You are not allowed to visit the beds of drained ponds. Some areas can be closed due to the breeding of birds and mammals (updated July 2020).

**Site 60 Siedlce Fishponds (Stawy w Siedlcach) – page 291**

The whole described area is a nature reserve and is not available for public.

**Site 62 Jeziorsko Reservoir – page 299**

Birds: Access to the reserve (southern part of the reservoir) is prohibited all year round. When you follow route A, B and D you are not allowed to enter to the reserve, you can walk outside the boundary of the reserve. It is prohibited to visit withdrawal zone of the reservoir all year round (path western of the point marked as “ford” on the map 62 is not available for public), (updated October 2019).

**Site 65 Bzura River Valley – page 315**

Access: Management of Walewice and Psary fishponds does not give permissions to visit this area (updated September 2019).

**Site 66 Nature reserves of the Puszcza Pilicka Forest – page 318**

Access: Nature reserve Lubiaszów is accessible by the educational nature trail (beginning at the local road Borkowice Mokre – Lubiaszów, approximate coordinates (51°25'40.9"N, 19°52'42.6"E)) and by bike trail. There is a local road Borkowice Mokre – Lubiaszów along the eastern boundary of the reserve, you can walk also there.

Nature reserve Gaik is not available to public. There are local roads along the southern and western boundary of the reserve, you can walk there.

Nature reserve Błogie is accessible to public only by the local road Błogie Rządowe – Małe Końskie. There are local roads along the western boundary of the reserve, and the path along the southern boundary of the reserve, you can walk also there.

Map of the Sulejowski Landscape Park with reserves Lubiaszów, Gaik and Błogie is available at [https://parkilodzkie.pl/images//NPK/aktualnosci/Mapa\\_Sulejowskiego\\_PK\\_1-50.000\\_akt.\\_11-2014\\_-\\_do\\_druku.pdf](https://parkilodzkie.pl/images//NPK/aktualnosci/Mapa_Sulejowskiego_PK_1-50.000_akt._11-2014_-_do_druku.pdf)

Nature reserve Spała is available by the educational nature trail “Lasy Spalskie” (in the northern part of the reserve), the beginning is in the village of Spała by the Foresters House (Dom Leśnika). The southern part of the reserve is available by the red tourist trail following the local road Spała-Borki.

Nature reserve Konewka is available by the local road (blue bike trail), there is also the yellow bike trail following the southern boundary of the reserve. See the map of Spalski Landscape Park mentioned below.

Nature reserve Żądłowice is available by the yellow bike trail, there are also local roads along the southern and western boundary of the reserve.

Map of the Spalski Landscape Park with reserves Spała, Konewka and Żądłowice is available at [https://parkilodzkie.pl/images//NPK/aktualnosci/Mapa\\_Spalskiego\\_PK\\_1-40.000\\_akt.\\_11-2014\\_-\\_do\\_druku.pdf](https://parkilodzkie.pl/images//NPK/aktualnosci/Mapa_Spalskiego_PK_1-40.000_akt._11-2014_-_do_druku.pdf) (updated October 2019)

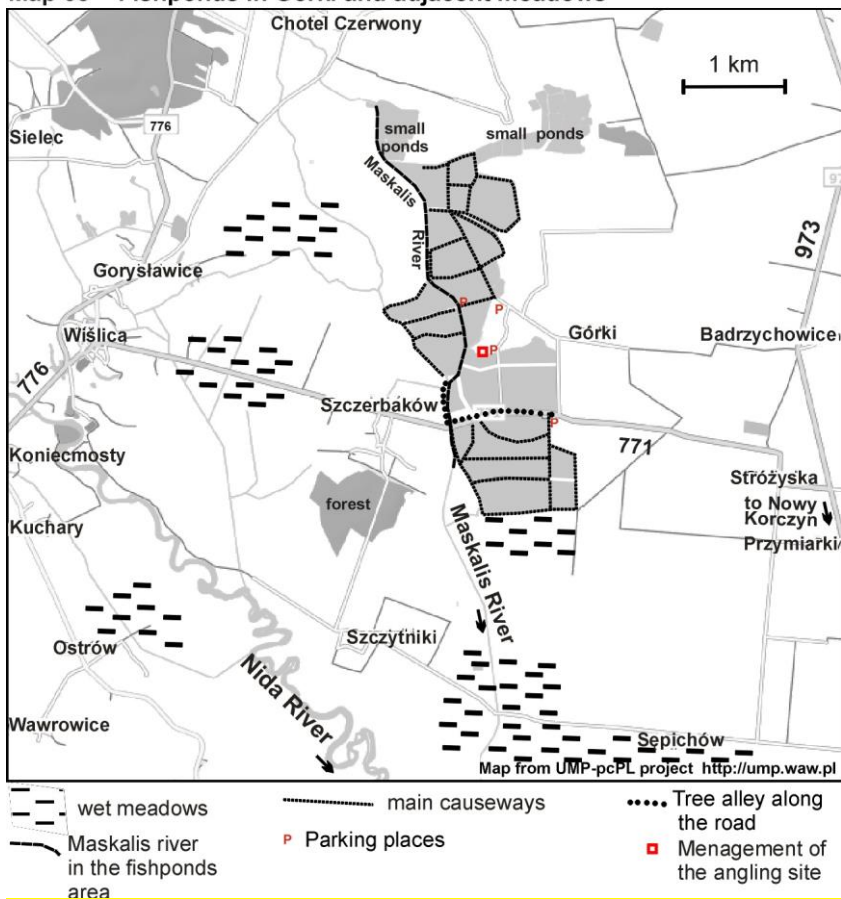
### **Site 68 Górki Fishponds - page 325**

Access: The current phone number to the fishponds management is +48 519 163 835. This reaches Mr Dominik Druh, with whom communication in English and Spanish is possible. Since May 2021 an entry fee of 20 PLN has been charged, you should pay to the staff of an angling site. You should ring the fishponds management in advance of a visit, if no answer, send sms. There is an observation tower in the fishponds area.

You are not allowed to visit the beds of drained ponds or wade in ponds. Parking is allowed only on the places shown on the map. You are not allowed to drive your car on causeways. (updated May2021)



Map 68 - Fishponds in Górki and adjacent meadows



Copyright UMP-pcPL contributors <http://ump.waw.pl/>. This work is licensed under a Creative Commons Attribution-Share Alike 3.0 License <https://creativecommons.org/licenses/by-sa/3.0/>

### Site 69 Młodzawy Fishponds - page 331

Access: The tourist information point at the Regional Museum in Pińczów (Muzeum Regionalne w Pińczowie) – new current webpage address - <http://muzeumpinczow.pl/>

The current phone number to the fishponds management is +48 519 163 835. This reaches Mr Dominik Druh, with whom communication in English and Spanish is possible. Since September 2016 an entry fee of 10 PLN has been charged. The management should be contacted at least 1 day in advance of a visit.

How to get there (updated): From Kielce follow road No. 766, direction Pińczów, where you cross to the right side of the river (still on road No. 766), directions Węchadłów 2 – 3 km further on, in the village of Skrzypiów, turn left for Wiślina and Młodzawy Duże. Turn left beyond the grocer's shop (the only one on the left hand-side of the road, 250 m into the village) using a renovated dirt road in quite good condition. You can leave your car by the entrance to the fishponds area near the white building, though only if permission from the fishponds management has been received. Otherwise the best location in this village to leave your car is by the grocer's shop. It will take approximately 15 min on foot to reach the site.

Also of interest: The current phone number to the management of the fishponds in Maleszowa (the same company as at Górki and Młodzawy) is +48 519 163 835. This reaches Mr Dominik Druh, with whom communication in English and Spanish is possible. **You should ring the fishponds management in advance of a visit, if no answer, send sms.**

Since September 2016 an entry fee of 10 PLN has been charged.

### Site 72 Marshy Valley of the Krasna River and its tributaries - page 339

Also of interest: Reserves Świnia Góra and Dalejów are not available to public.

Reserve Gagaty Sołytkowskie is accessible by the educational trail.

Reserve Skalki Piekło pod Niekłaniem is accessible by the educational trail and two tourist trails. There is a dedicated parking place (according to the site of State Forests <http://www.czaswlas.pl>) by the local road Niekłań – Antoniów (51°11'18.7"N, 20°38'36.8"E). (updated October 2019)  
Reserve Górna Krasna is not accessible for public. Local roads Krasna – Bień, Rogowice Długojów and Krasna – Luta are available for public. (updated May 2020)

**Parking places** (according to the site of State Forests <http://www.czaswlas.pl>):  
In the village of Polesie by the local road Samsonów – Szałas (51°0'57"N, 20°37'37" E).  
In the end of village of Długojów, by the old forester house (51°2'15"N, 20°36'21"E).  
By the local road Mniów - Serbinów (51°1'25"N, 20°30'49"E).  
In the end of village of Kruk by the Forrest Administration Office (Nadleśnictwo Suchedniów) (51°2'59"N, 20°48'19"E). (updated May 2020)

### **Site 73 Cisowsko-Orłowińskie Forests (Lasy Cisowsko-Orłowińskie) and their surroundings – page 344**

Access: Nature reserve Cisów is accessible by the educational trail: village of Cisów – Góra Września (mountain) – village of Daleszyce and the blue tourist trail: village of Daleszyce – village of Widelki – village of Łągów.  
Nature reserves Słopiec, Białe Ługi and Zamczysko are not available to public. (updated September 2019)

### **Site 73 Wytyckie Lake and Krowie Bagno Marsh (Jezioro Wytyckie i Krowie Bagno) – page 365**

Birds: Bird Life Poland (OTOP) started renaturalisation programme in Krowie Bagno Marsh. The area will be more wet as it was before drainage in 1970s, trees and bushes are removed to restore open area of peatland. In the spring 2019 several displaying Great Snipes were observed in the east part of the Krowie Bagno Marsh (first observation of Great Snipe in this area) and 2 males of Aquatic Warbler were singing in the east part of the Krowie Bagno Marsh near Krychów (first observation since 1970s) (updated December 2019).

### **Site 76 Zemborzyce Reservoir (Zalew Zemborzycki) – page 356**

Also of interest: Nature reserve Stasin is not available to public. (updated April 2021)

### **Site 77 Lower Wieprz River Valley and fishponds in Ryki (Dolina dolnego Wieprza i stawy w Rykach) – page 359**

Birds: Nature reserve Piskory is available by educational nature trails.  
Nature reserve Czaplinięć koło Gołębia is not available to public. (updated April 2021)

### **Site 80 Ravine of the Wisła River in Małopolska (Małopolski Przełom Wisły) – page 373**

Access: We do not advice birdwatching from the bridge in Annopol because of very heavy traffic and extremely narrow sidewalk.

Nature reserve Krowia Wyspa is not available to public. (updated April 2021)

### **Site 81 Janów Forest (Lasy Janowskie) – page 378**

Access to the fishponds in Momoty: The tourist trail from Momoty Górne to the fishponds is marked in yellow. The path goes along the western margin of fishponds. You can see fishponds very well. Convenient parking place is by the church in Momoty Górne. (updated August 2019)

Access: Nature reserve Obar is available by educational nature trail. See map at: [http://bip.lublin.rdos.gov.pl/files/obwieszczenia/29453/Zarzadzenie\\_RDOS\\_Lublin\\_44\\_2014.pdf](http://bip.lublin.rdos.gov.pl/files/obwieszczenia/29453/Zarzadzenie_RDOS_Lublin_44_2014.pdf)  
Nature reserves Imielty Ług, Lasy Janowskie and Szklarnia are available by educational nature trails and tourist trails. See map at: <https://parki.lubelskie.pl/media/7385/file/pk-lasy-janowskie.pdf>

### **Site 82 Central and Eastern Roztocze, Solska Forest, Nielisz Reservoir and fishponds in the valleys of the Solokija and Huczwa Rivers – page 385**

Nature reserves Czartowe Pole and Nad Tanwią are available by tourist trails. See map at <https://parki.lubelskie.pl/media/9204/file/park-krajobrazowy-puszczy-solskiej.pdf>

Nature reserve Szum is available by educational nature trail. See map at:

[http://bip.lublin.rdos.gov.pl/files/obwieszczenia/57369/Zarzadzenie\\_RDOS\\_Lublin\\_Nr\\_20\\_2016.pdf](http://bip.lublin.rdos.gov.pl/files/obwieszczenia/57369/Zarzadzenie_RDOS_Lublin_Nr_20_2016.pdf)

There is a dedicated parking place by the local road from Górecko Stare to Górecko Kościelne, approximate coordinates (50°30'49"N, 22°59'03"E) (according to the site of State Forests <http://www.czaswlas.pl>).

Nature reserve Święty Roch and Zarośle are available by tourist trails.

Nature reserves Debry, Hubale, Jalinka, Nowiny and Wieprzec are not available to public. (updated April 2021)

### **M. SILESIA (ŚLĄSK) – page 394**

The valley of the Upper Vistula (in the easternmost part of Silesia and westernmost part of Małopolska) represents a breeding area for Black-crowned Night Heron. The largest breeding colony (of about 100 pairs) is situated among the Ochaby Fishponds (on two islands in the Bażyniec Pond). Ochaby village is situated about 11 km south of Strumień (site 98 Goczałkowice Reservoir). GPS coordinates 49°51'15.8"N, 18°46'49.93"E.

### **Site 83 Stawy Przemkowskie Nature Reserve (Przemków Fishponds) – page 395**

To visit fishponds you should contact a management - phone +48 881 358 983, mail [phpuremus@wp.pl](mailto:phpuremus@wp.pl) (Mr Krzysztof Kowalewski). You are not allowed to drive your car or bike on causeways.

There is an observation tower on the eastern boundary of the reserve (access from the local road Przemków – Ostaszów - Gaworzyce ). The access is free (you do not need to contact fishponds management when you visit only the tower). The map of the reserve is available at <http://www.przemkow.wroclaw.lasy.gov.pl/documents/21700525/34312455/Mapa+Turystyczna/c1d24b14-35df-002d-8969-ed324c77668c?t=1549621114465> (observation tower is marked as point 3, there is a reserve Łęgi Źródłiskowe koło Przemkowa on this map too, ) (updated November 2020).

Also of interest: Reserves Torfowisko Borówki and Buczyzna Piotrowicka are not available to public.

Reserve Łęgi Źródłiskowe koło Przemkowa is accessible by the educational trail, the beginning is on the western outskirts of Przemków village. The map of the trail is available at <http://bip.wroclaw.rdos.gov.pl/files/obwieszczenia/81842/Szlaki%20C5%81%C4%99gi%20C5%B9r%C3%B3dliskowe%20ko%C5%82o%20Przemkowa.pdf>

Reserve Buczyzna Szprotawska is accessible by the educational trail, the beginning is at a dedicated parking place (according to the site of State Forests <http://www.czaswlas.pl>) called Do Buczyzny by the road No 12 western of the village of Piotrowice, approximate coordinates (51°31'59"N, 15°40'25"E). The trail leads toward the south, the map of the trail in the reserve is available at [http://gorzow.rdos.gov.pl/files/artykuly/105679/Buczyna-Szprotawska---szlak\\_icon.jpg](http://gorzow.rdos.gov.pl/files/artykuly/105679/Buczyna-Szprotawska---szlak_icon.jpg)

After the fire in 2014 a Pedunculated Oak called Chrobry near Piotrowice is dying and has leaves only on a few branches. Approximate coordinates of the oak (15°42'42"N, 51°31'16"E (according to the site of State Forests <http://www.czaswlas.pl>) (updated December 2019).

### **Site 90 Wrocław-Świniary sewage farm (Pola irygacyjne Wrocław-Świniary) – page 422**

Since 2015 sewage is not supplied to the sewage ponds. There are plans to maintain this area as not build up area, and continue water supply to prevent the area to dry. Within the site there are still ditches and ponds filled with water and sludge which can pose a drowning hazard. (updated September 2019)

### **Site 100 Oświęcim Fishponds (Stawy Oświęcimskie) – page 455**

Access: Management of Stawy Monowskie fishponds do not give permissions to visit this area (May 2020). The road leading through the fishponds belongs to the commune and is available. No parking possibilities along the road.

Access: Nature reserve Żaki is not available for public. (updated September 2020)

### **Site 101 Fishpond groups between Zator and Wadowice - page 460**

Access: Contact to the management of the northern part of the Rudze Fishponds (between the Chodnikowiec and Kamski III Ponds) – mail: [leszek.guzdek@o2.pl](mailto:leszek.guzdek@o2.pl) phone: +48 515 412 586 (Mr. Kamil Guzdek), communication in English is possible. Guided tour on the current methods of fish farming in Rudze Fishponds can be arranged on request.

Contact to the management of the Tomice Fishponds - phone +48 661 998 874 (Mon to Fri, 10 a.m. to 3 p.m.), or mail: [marek.foks@maczka.pl](mailto:marek.foks@maczka.pl) (Mr. Marek Foks), communication in English is possible. The fishponds are again filled with water, and active fish farming is in progress.

Bugaj fishponds: The only parking possibility is near the fishpond Szydłowiec Stary by the shelter, marked with “i” on the map 101. The parking near fish farm buildings marked on the map 101 is not available. To visit Bugaj fishponds you should contact a management at [biuro@rzdzator.pl](mailto:biuro@rzdzator.pl) and send names of all visitors, date of visit and which hour the visit starts and which hour ends. The management should be contacted at least 1 day in advance of a visit.

You are not allowed to drive your car or bike on causeways. (updated May 2020).

### **Site 102 Fishponds near the town of Zator (Stawy Zatorskie): Przeręb and Spytkowice ponds, Jankowice and Palczowice (Ślepowron pond) gravel pits – page 465**

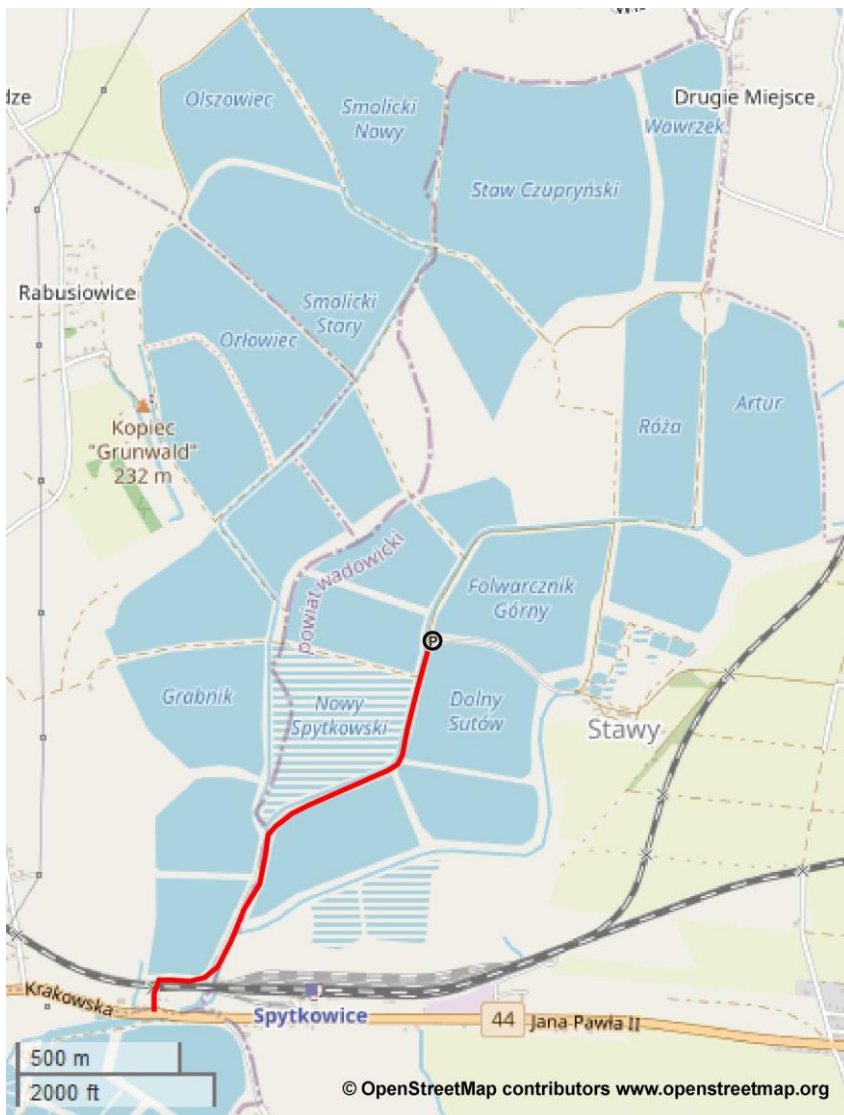
Przeręb fishponds: The only parking possibility is near the fishpond Jastrzębczyk, marked with “P” on the map 102. To visit Przeręb fishponds you should contact a management at [biuro@rzdzator.pl](mailto:biuro@rzdzator.pl) and send names of all visitors, date of visit and which hour the visit starts and which hour ends. The management should be contacted at least 1 day in advance of a visit.

You are not allowed to drive your car or bike on causeways.

You can visit the educational trail Maurycy <http://dolinakarpia.org/57-dolinakarpiaorg-sciezka-przyrodnicza-maurycy> and/or the educational trail Marynin <http://dolinakarpia.org/56-dolinakarpiaorg-sciezka-przyrodnicza-marynin> without the contact with management. Both trails are free available for public. (updated May 2020).

Spytkowice fishponds: The only parking possibility is shown on the map. To visit Spytkowice fishponds you should contact a management at [biuro@rzdzator.pl](mailto:biuro@rzdzator.pl) and send names of all visitors, date of visit and which hour the visit starts and which hour ends. The management should be contacted at least 1 day in advance of a visit.

You are not allowed to drive your car or bike on causeways. (updated May 2020).



Copyright OpenStreetMap contributors [www.openstreetmap.org](http://www.openstreetmap.org). This work is licensed under a Creative Commons Attribution-Share Alike Generic 2.0 (CC-BY-SA 2.0) License <http://creativecommons.org/licenses/by-sa/2.0>

Access: Nature reserve Przeciszów is not available for public. (updated September 2020)

### **Site 105 City of Cracow (Kraków) – page 475**

**Las Wolski** - Nature reserves Bielańskie Skałki and Skałki Przegorzalskie are not available for public. (updated September 2020)

### **Site 1059 Beskid Wyspowy Mountains – page 502**

Access: Nature reserve Śnieżnica is not available for public. There is a green tourist trail along the southern boundary of the reserve, you can walk there.

Nature reserve Kostrza is available for public. You should follow green tourist trail. It is prohibited to walk outside the tourist trail.

Nature reserve Luboń Wielki is available for public. You should follow yellow or red tourist trail. It is prohibited to walk outside the tourist trails.

Nature reserve Kamionna is not available for public. There are yellow and blue tourist trails along the southern boundary of the reserve, you can walk there.

Nature reserve Mogielica is available for public. You should follow yellow, green or blue tourist trail. It is prohibited to walk outside the tourist trails. (updated September 2020)

### Site 116 Bieszczady Mountains – page 532

Access: The map of tourist trails and parking places in Bieszczady National Park is available at <https://www.bdpn.pl/dokumenty/regulamin/2020/zal.3.jpg?v=2> (updated July 2020).

### Site 117 Przemyśl Hills (Pogórze Przemyskie) – page 542

Access: Reserves Krępak, Broduszurki, Kalwaria Paclawska and Przełom Hołubli are accessible by educational nature trails. (updated August 2019)

### Site 118 Fishponds in Starzawa – page 542

Access: Mail to the fishponds management [biuro@starzawa.pl](mailto:biuro@starzawa.pl) (updated August 2019)

Starzawa Reserve is accessible by educational nature trails, see the map. Trails marked as “A” and “B” are within the reserve. The forest road outside the reserve is marked as “C”. (updated March 2021)

Also of interest: Access to the reserve Szachownica kostkowata w Stubnie is prohibited (updated December 2019).

Map 118 - Fishponds in Starzawa



Copyright UMP-pcPL contributors <http://ump.waw.pl/> This work is licensed under a [Creative Commons Attribution-Share Alike 3.0 License](https://creativecommons.org/licenses/by-sa/3.0/).

### Site 119 Fishponds in Buda Stalowska – page 546

How to get there: From the road No. 871 Nisko - Stalowa Wola, when you go from Tarnobrzeg turn right (southwards) just behind the road sign “the end of the village of Stale” – (following the road sign “Nowa Dęba 14 km”). After about 7 kilometers by the road sign “Nowa Dęba 7 km” pointing rightward, go straight ahead following the road sign “Gospodarstwo Rybackie”. You are now on the map 119.

Access: Parking place number 2 is not available. (updated August 2019)

**Checklist of the Birds of Poland – page 551**

A new version updated as of 31<sup>st</sup> December 2019 is available at the Polish Avifaunistic Commission website [http://komisjafaunistyczna.pl/?page\\_id=2654&lang=en](http://komisjafaunistyczna.pl/?page_id=2654&lang=en) (updated May 2020).

**Checklist of the Birds of Poland – page 556**

Line 174 (Dunlin - *Calidris alpina*) – black triangle should be stroked according to the new regulation of the Minister of the Environment of 16 December 2016 on animal species protection.

**Species recorded in Poland but not merged into national avifauna – page 564**

A new version updated as of 1<sup>st</sup> July 2018 is available at the Polish Avifaunistic Commission website [http://komisjafaunistyczna.pl/?page\\_id=44](http://komisjafaunistyczna.pl/?page_id=44) (updated May 2020).